

TECHNICAL MANUAL }  
No.11-6625-822-40P }

HEADQUARTERS  
DEPARTMENT OF THE ARMY  
WASHINGTON, DC, 23 November 1976

**GENERAL SUPPORT MAINTENANCE  
REPAIR PARTS AND SPECIAL TOOLS LISTS  
(INCLUDING DEPOT MAINTENANCE REPAIR PARTS AND SPECIAL TOOLS)  
FOR**

**SIGNAL GENERATOR SG-321B/U**

**( N S N 6625-00-935-6924)**

**Current as of 7 September 1976**

**REPORTING OF ERRORS**

You can improve this manual by recommending improvements using DA Form 2028-2 (Test) located in the back of the manual. Simply tear out the self addressed form, fill it out as shown on the sample, fold it where shown, and drop it in the mail.

If there are no blank DA Form 2028-2 (Test) in the back of your manual, use the standard DA Form 2028 (Recommended Changes to Publications and Blank Forms) and forward to the Commander, US Army Electronics Command, ATTN: DRSEL-MA-Q, Fort Monmouth, New Jersey 07703.

In either case a reply will be furnished direct to you.

**Table of Contents**

		Page	Illus Figure
SECTION	I. Introduction .....	1	
	II. Repair parts list .....	5	
Group	00. Generator, Signal SG-321B/U .....	5	1-11
SECTION	III. Special tools list (not applicable)		
	IV. National stock number and part number index .....	28	

\*This manual supersedes so much of TM 11-6625-822-45, 21 August 1969, as pertains to repair parts and special tools list.

SECTION I

INTRODUCTION

1. Scope

This manual lists repair parts and special tools required for performance of general support maintenance of the SG-321B/U.

2. General

This Repair Parts and Special Tools List is divided into the following sections:

a. *Section II. Repair Parts List.* A list of repair parts authorized for use in the performance of maintenance. The list also includes parts which must be removed for replacement of the authorized parts. Parts lists are composed of functional groups in ascending numerical sequence, with the parts in each group listed in figure and item number sequence.

b. *Section III. Special Tools List.* Not applicable.

c. *Section IV. National Stock Number and Part Number Index.* A list, in ascending National item identification number (NIIN, last 9 digits) sequence, of all National stock numbers appearing in the listings, followed by a list, in alphameric sequence, of all part numbers appearing in the listings. National stock number and part numbers are cross-referenced to each illustration figure and item number appearance.

3. Explanation of Columns

The following provides an explanation of columns found in the tabular listings:

a. *Illustration.* This column is divided as follows:

(1) *Figure number.* Indicates the figure number of the illustration in which the item is shown.

(2) *Item number.* The number used to identify each item called out in the illustration.

b. *Source, Maintenance, and Recoverability Codes (SMR)*

(1) *Source code.* Source codes are assigned to support items to indicate the manner of acquiring support items for maintenance, repair, or overhaul of end items. Source codes are entered in the first and second positions of the Uniform SMR Code format as follows:

<i>Code</i>	<i>Definition</i>
PA-	Item procured and stocked for anticipated or known usage.
XD-A	A support item that is not stocked. When required, item will be procured through normal supply channels.

NOTE

Cannibalization or salvage may be used as a source of supply for any items source coded above except those coded

XA, XD, and aircraft support items as restricted by AR 700-42.

(2) *Maintenance code.* Maintenance codes are assigned to indicate the levels of maintenance authorized to USE and REPAIR support items. The maintenance codes are entered in the third and fourth positions of the Uniform SMR Code format as follows:

(a) The maintenance code entered in the third position will indicate the lowest maintenance level authorized to remove, replace, and use the support item. The maintenance code entered in the third position will indicate one of the following levels of maintenance:

<i>Code</i>	<i>Application/Explanation</i>
O-	Support item is removed, replaced, used at the organizational level.
H-	Support item is removed, replaced, used at the general support level.

(b) The maintenance code entered in the fourth position indicates whether the item is to be repaired and identifies the lowest maintenance level with the capability to perform complete repair (i.e., all authorized maintenance functions). This position will contain one of the following maintenance codes:

<i>Code</i>	<i>Application/Explanation</i>
Z-	Nonreparable No repair is authorized.

(3) *Recoverability code.* Recoverability codes are assigned to support items to indicate the disposition action on unserviceable items. The recoverability code is entered in the fifth position of the Uniform SMR Code format as follows:

<i>Recoverability codes</i>	<i>Definition</i>
Z-	Nonreparable item. When unserviceable, condemn and dispose at the level indicated in position 3.

c. *National Stock Number.* Indicates the National stock number assigned to the item and will be used for requisitioning purposes.

d. *Part Number.* Indicates the primary number used by the manufacturer (individual, company, firm, corporation, or Government activity), which controls the design and characteristics of the item by means of its engineering drawings, specifications standards, and inspection

requirements, to identify an item or range of items.

**NOTE**

When a stock numbered item is requisitioned, the repair part received may have a different part number than the part being replaced.

e. Federal Supply Code for Manufacturer (FSCM). The FSCM is a 5-digit numeric code listed in SB 708-42 which is used to identify the manufacturer, distributor, or Government agency, etc.

f Description. Indicates the Federal item name and, if required, a minimum description to identify the item.

g. Unit of Measure (U/M). Indicates the standard of the basic quantity of the listed item as used in performing the actual maintenance function. This measure is expressed by a two character alphabetical abbreviation (e.g., ea, in, pr, etc.). When the unit of measure differs from the unit of issue, the lowest unit of issue that will satisfy the required units of measure will be requisitioned.

h. Quantity Incorporated in Unit. Indicates the quantity of the item used in the breakout shown on the illustration figure, which is prepared for a functional group, subfunctional group, or an assembly.

**4. Special Information**

The following publications pertain to the SG321B/U and its components: TM 11-6625-822-12, Signal Generator SG-321B/U

TM 11-6625-822-45, Signal Generator SG-321B/U  
 TM 11-6625-822-20P, Signal Generator SG-321B/U

**5 How to Locate Repair Parts**

a. When National stock number or part number is unknown.

(1) *First.* Using the table of contents, determine the functional group within which the repair part belongs. This is necessary since illustrations are prepared for functional groups and listings are divided into the same groups.

(2) *Second.* Find the illustration covering the functional group to which the repair part belongs.

(3) *Third.* Identify the repair part on the illustration and note the illustration figure and item number of the repair part.

(4) *Fourth.* Using the Repair Parts Listing, find the figure and item number noted on the illustration.

b. When National stock number or part number is known.

(1) *First.* Using the Index of National Stock Numbers and Part Numbers, find the pertinent National stock number or part number. This index is in ascending NIIN sequence followed by a list of part numbers in ascending alphameric sequence, cross-referenced to the illustration figure number and item number.

(2) *Second.* After finding the figure and item number, locate the figure and item number in the repair parts list.

**6. Abbreviations**

Not applicable.

(Next printed page is 4)

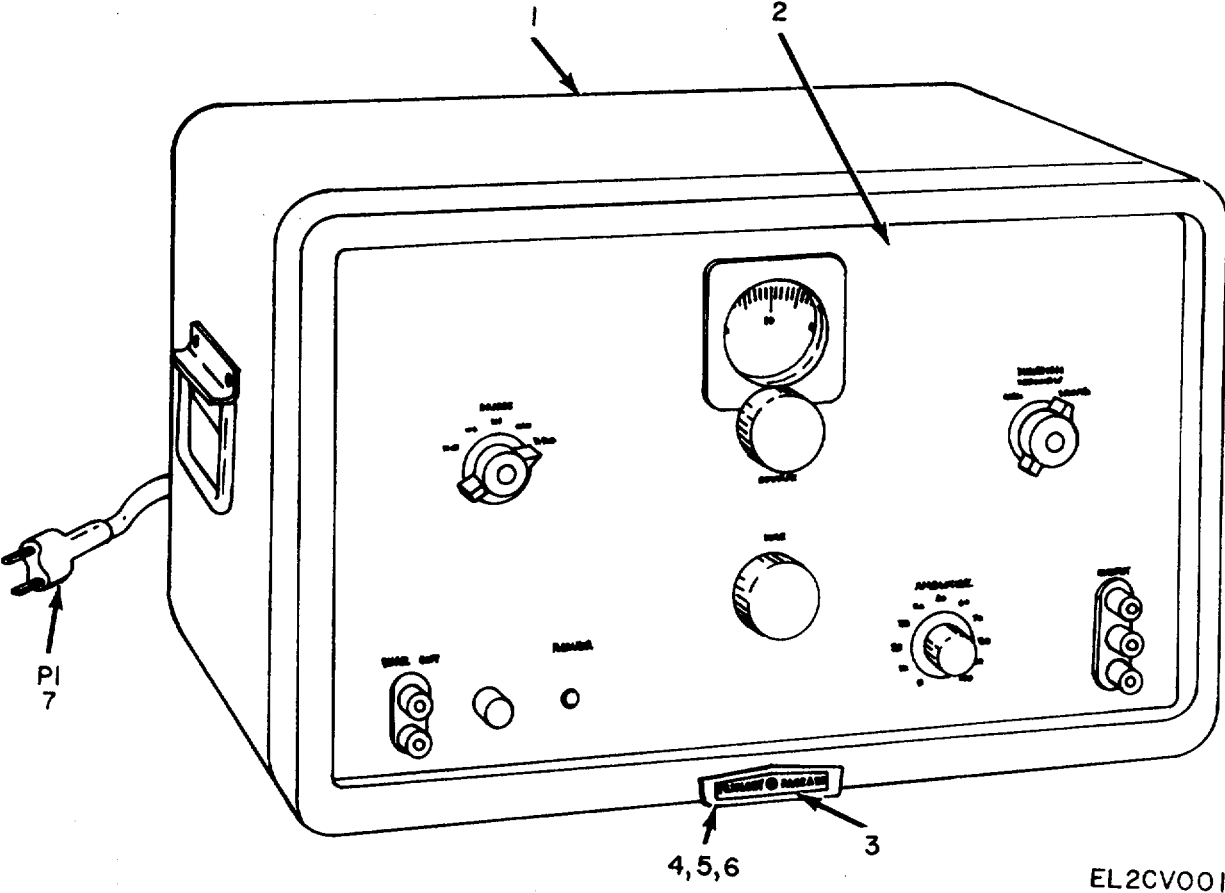
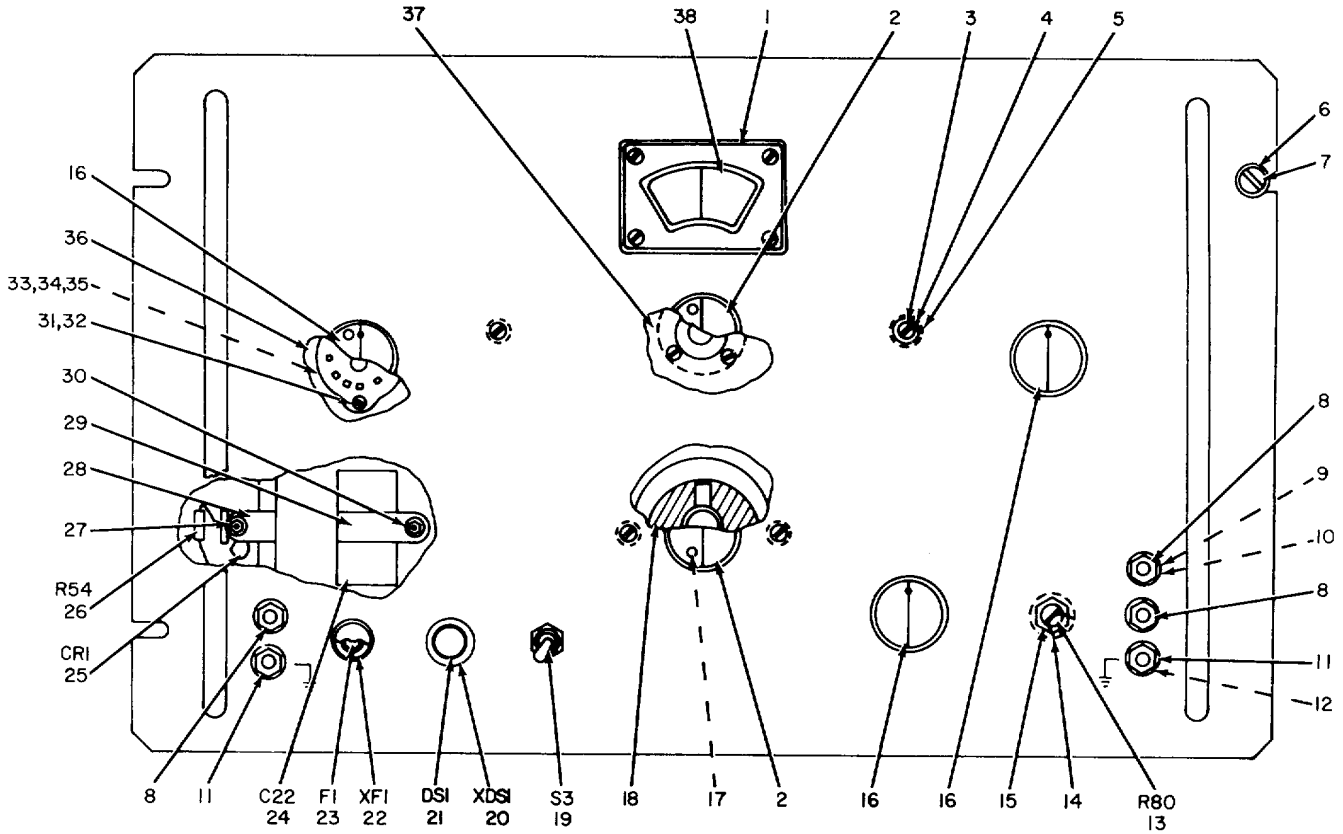


Figure 1. Generator, Signal SG-321B/U.

SECTION II

TM 11-6625-822-40P

(1) ILLUSTRATION		(2)	(3)	(4)	(5)	(6)	(7)	(8)
(a) FIG NO.	(b) ITEM NO.	SMR CODE	NATIONAL STOCK NUMBER	PART NUMBER	FSCM	DESCRIPTION  USABLE ON CODE	U/M	QTY INC IN UNIT
						GROUP 00 GENERATOR, SIGNAL SG-32181U		
1	1	XDHZZ		422000	24635	CASE ASSEMBLY	EA	1
1	2	XDHZZ		422100	24635	FRONT PANEL, CHASSIS ASSEMBLY	EA	1
1	3	XDHZZ		421002	24635	PLATE, IDENTIFICATION	EA	1
1	4	XDHZZ		MS35223-5	96906	SCREW, MACHINE	EA	4
1	5	XDHZZ	5310-00-579-5554	MS35333-35	96906	WASHER, LOCK	EA	4
1	6	XDHZZ	5310-00-934-9738	MS35649-222	96906	NUT, PLAIN, HEXAGON	EA	4
1	7	XDHZZ		424409	24635	CONNECTOR , PLUG. ELECTRICAL	EA	1



EL2CV002

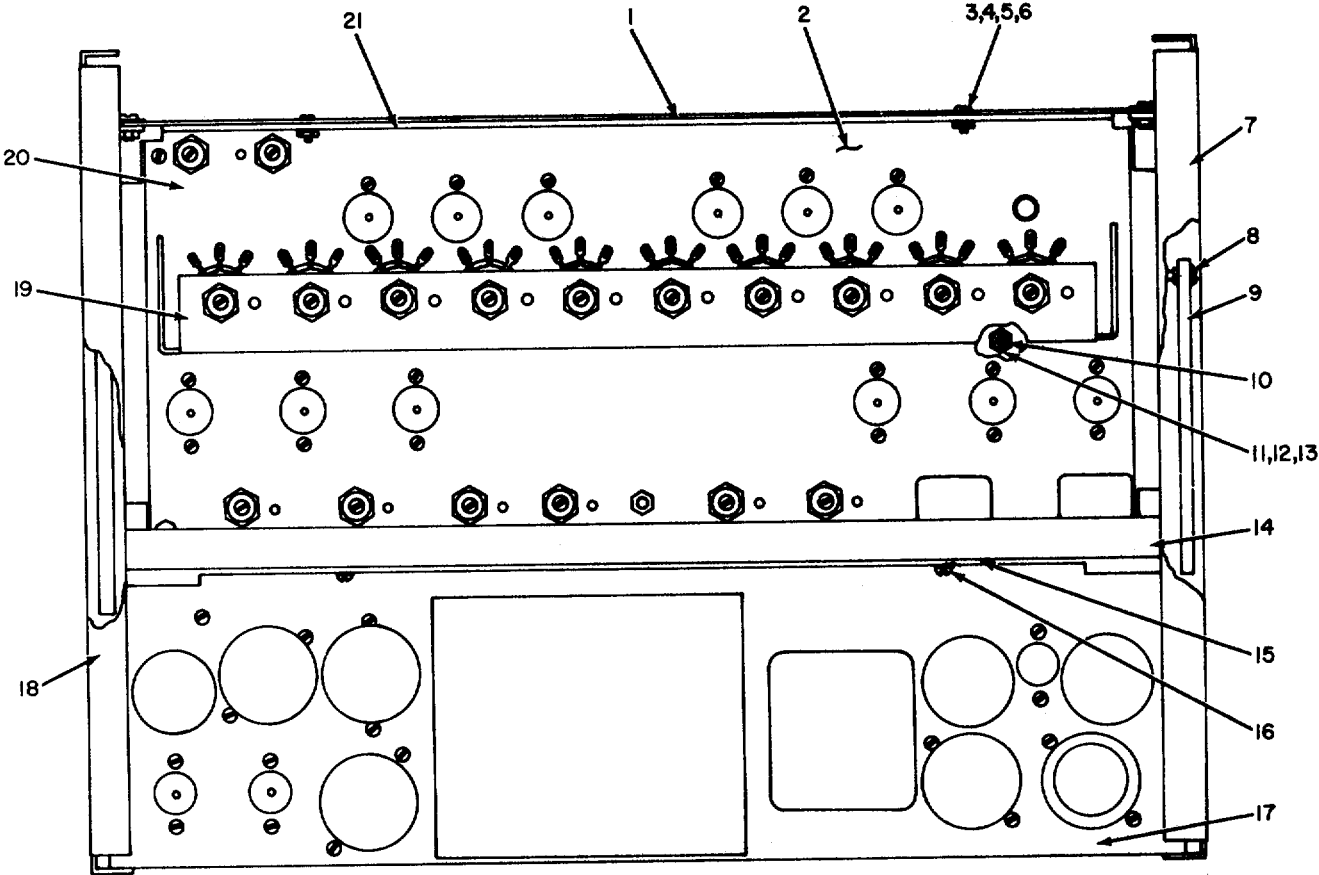
Figure 2. Generator, Signal SG-321B/U, Front Panel Assembly.

## SECTION II

TM 11-6625-822-40P

(1) ILLUSTRATION		(2)	(3)	(4)	(5)	(6) DESCRIPTION	(7)	(8)
(a) FIG NO.	(b) ITEM NO.	SMR CODE	NATIONAL STOCK NUMBER	PART NUMBER	FSCM	USABLE ON CODE	U/M	QTY INC IN UNIT
2	1	XDHZZ		423014	24635	BEZEL	EA	1
2	2	XDHZZ		423002	24635	KNOB	EA	2
2	3	XDHZZ		422101	24635	SCREN,MACHINE	EA	4
2	4	XDHZZ	5310-00-559-0070	MS35333-38	96906	WASHER,LOCK	EA	12
2	5	XDHZZ	5310-00-938-2013	MS35649-224	96906	NUTWPLAIN,HEXAGON	EA	8
2	6	XDHZZ		421001	24635	WASHER,NYLON	EA	4
2	7	XDHZZ		421003	24635	SCREW,MACHINE	EA	4
2	8	XDHZZ		423006	24635	BINDING POST,RED	EA	3
2	9	XDHZZ	5310-00-951-4679	MS27183-3	96906	WASHER.FLAT	EA	2
2	10	XDHZZ	5310-00-934-9739	MS35649-242	96906	NUT1PLAIN,HEXAGON	EA	37
2	11	XDHZZ		423004	24635	BINDING POST,BLACK	EA	2
2	12	XDHZZ		NS35333-36	96906	WASHER1LOCK	EA	2
2	13	PAHZZ	5905-00-539-5013	RY4NAYS0252A	24635	RESISTOR,VARIABLE	EA	1
2	14	XDHZZ	5310-00-595-7237	MS35333-42	96906	WASHER,LOCK	EA	26
2	15	XDHZZ	5310-00-056-3395	MS35649-2382	96906	NUT,PLAIN,HEXAGON	EA	26
2	16	XDHZZ		423001	24635	KNOB	EA	3
2	17	XDHZZ	3120-00-400-7688	424006	24635	BEARING,PANEL	EA	1
2	18	PAHZZ	6625-00-135-6701	425400	24635	FINE TUNING ASSEMBLY	EA	1
2	19	PAHZZ	5930-00-655-1514	M535058-22	96906	SWITCH,TDGGLE	EA	1
2	20	XDHZZ		423012	24635	LIGHT,INDICATOR	EA	1
2	21	PAOZZ	6240-00-155-8706	47	08806	LAMP,INCANOESCENT	EA	1
2	22	XDHZZ		423007	24635	FUSEHOLDER	EA	1
2	23	PAOZZ	5920-00-060-2424	FO2GSROOA	81349	FUSE.CARTRIDGE	EA	1
2	24	PAHZZ	5910-00-556-9455	CP04A1KE105K1	81349	CAPACITOR,FIXED,PAPER	EA	1
2	25	PAHZZ	5961-00-840-5466	IN4858	81349	SEMICONDUCTOR DEVICE,DIODE	EA	1
2	26	PAHZZ	5905-00-807-7277	RC32GF122K	81349	RESISTOR.FIXED,COMPOSITION	EA	1
2	27	XDHZZ		423018	24635	TERMINAL BOARD	EA	1
2	28	XDHZZ		423016	24635	CLAMP,LOOP	EA	1
2	29	XDHZZ		423017	24635	CLAMP,LOOP	EA	1
2	30	XDHZZ		MS35223-17	96906	SCREW.MACHINE	EA	2
2	31	XDHZZ	5305-00-638-3358	MS35223-45	96906	SCREN.MACHINE	EA	20
2	32	XDHZZ	5310-00-809-8544	MS527183-7	96906	WASHER,FLAT	EA	36
2	33	XDHZZ		424001	24635	NUT,SLEEVE	EA	4
2	34	XDHZZ	5310-00-596-7693	MS35335-31	96906	WASHER,LOCK	EA	4
2	35	XDHZZ	5310-00-982-6580	MS527183-1	96906	WASHER,FLAT	EA	4
2	36	PAHZZ	6625-00-450-3569	424000	24635	FREQUENCY CONTROL ASSEMBLY	EA	1
2	37	PAHZZ	6625-00-135-6704	425500	24635	COARSE TUNING ASSEMBLY	EA	1
2	38	XDHZZ		423015	24635	WINDOW,DIAL	EA	1

7/(8 blank)



TOP VIEW

EL2CV003

Figure 3. Generator, Signal SG-321B/U, Chassis Assembly (Sheet 1 of 2).



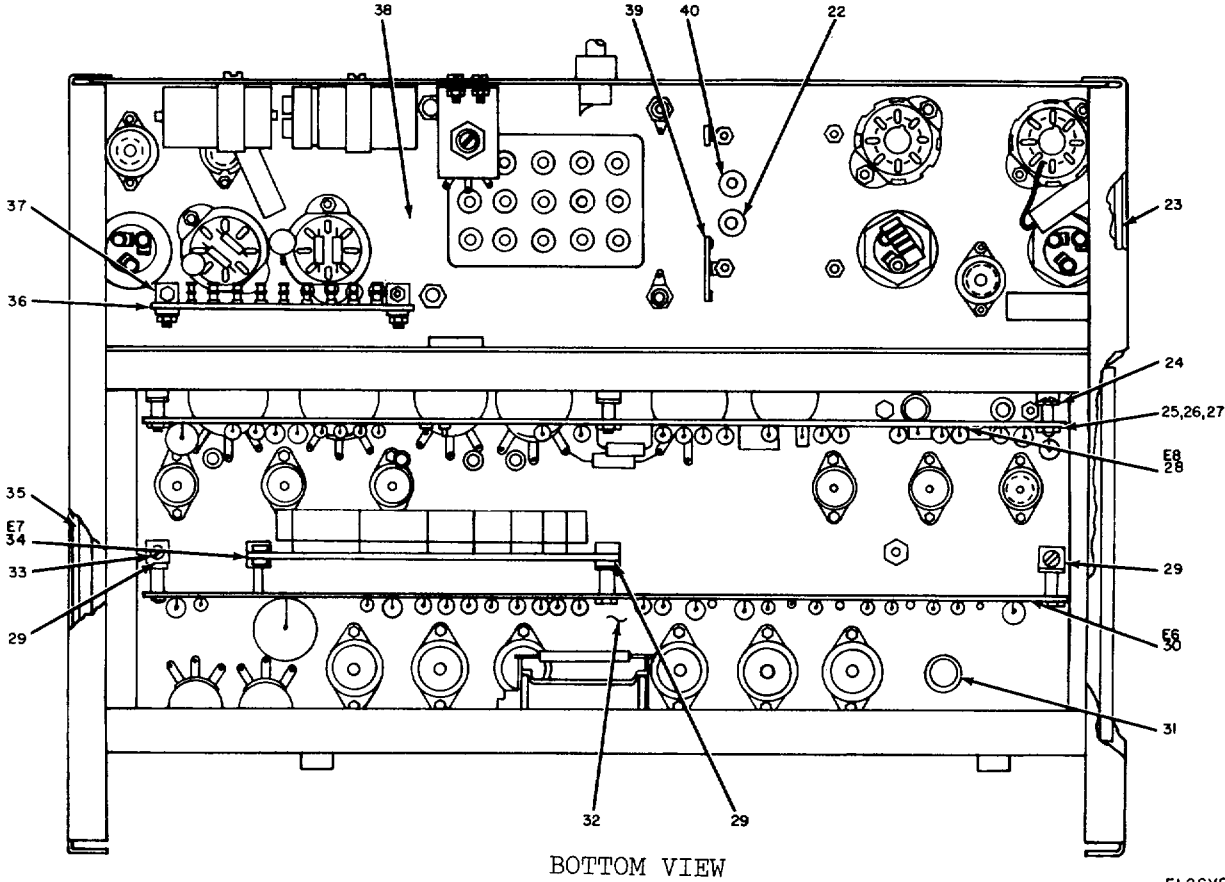


Figure 3. Generator, Signal SG-321B/U, Chassis Assembly (Sheet 2 of 2).

## SECTION II

TM 11-6625-822-40P

(1) ILLUSTRATION		(2)	(3)	(4)	(5)	(6) DESCRIPTION	(7)	(8)
(a) FIG NO.	(b) ITEM NO.	SMR CODE	NATIONAL STOCK NUMBER	PART NUMBER	FSCM	USABLE ON CODE	U/M	QTY INC IN UNIT
3	1	XDHZZ		423011	24635	PANEL,FRONT	EA	1
3	2	XDHZZ		423100	24635	CHASSIS ASSEMBLY,ELECTRICAL EQUIPMENT	EA	1
3	3	XDHZZ		MS35223-43	96906	SCREW,MACHINE	EA	18
3	4	XDHZZ	5310-00-809-8544	MS27183-7	96906	WASHER,FLAT	EA	24
3	5	XDHZZ	5310-00-596-T693	MS35335-31	96906	WASHER,LOCK	EA	24
3	6	XDHZZ		NS35644-224	96906	NUT,PLAIN,HEXAGON	EA	18
3	7	XDHZZ		423111	24635	PLATE,SIODELEFT HAND	EA	1
3	8	XDHZZ		MS35223-48	96906	SCREW,MACHINE	EA	2
3	9	XDHZZ		423106	24635	BOARD,INSULATED,SHORT	EA	4
3	10	XDHZZ		425001	24635	STUD,SPADE	EA	5
3	11	XDHZZ	5305-00-638-3438	MS35223-15	96906	SCREW,MACHINE	EA	5
3	12	XDHZZ	5310-00-6L6-3554	MS35335-29	96906	WASHER,LOCK	EA	5
3	13	XDHZZ	5310-00-934-9739	MS35649-242	96906	NUT,PLAIN,HEXAGON	EA	5
3	14	XDHZZ		423105	24635	PLATE.DIVIDER	EA	1
3	15	XDHZZ		423101	24635	BOARD,INSULATED,LONG	EA	2
3	16	XDHZZ	5305-00-576-7519	MS35223-46	96906	SCREW,MACHINE	EA	13
3	17	XDHZZ		424505	24635	PLATEBFRONT	EA	1
3	18	XDHZZ		423112	24635	PLATE,SIDE,RIGHT HAND	EA	1
3	19	XDHZZ		424500	24635	PLATE ASSEMBLY,FRONT	EA	1
3	20	XDHZZ		425002	24635	CHASSIS, TOP	EA	1
3	21	XDHZZ		424007	24635	PLATE,MOUNTING	EA	1
3	22	XDHZZ		424303	24635	GROMMET,PLASTIC	EA	1
3	23	XDHZZ		423102	24635	PLATE.SIDE.INNER,LEFT HAND	EA	1
3	24	XDHZZ		424404	24635	BRACKET,ANGLE	EA	1
3	25	XDHZZ	5305-00-207-0763	MS35223-28	96906	SCREW,MACHINE	EA	4
3	26	XDHZZ	5310-00-209-0788	MS35335-30	96906	WASHER,LOCK	EA	10
3	27	XDHZZ	5310-00-9349747	MS35649-262	96906	NUT,PLAIN.HEXAGON	EA	10
3	28	PAHZZ	6625-00-135-6706	425200	24635	PRINTED CIRCUIT BOARD ASSEMBLY	EA	1
3	29	XDHZZ		422101	24635	BRACKET,ANGLE	EA	3
3	30	PAHZZ	6625-00-191-9292	426100	24635	PRINTED CIRCUIT BOARD ASSEMBLY	EA	1
3	31	XDHZZ		U24410	24635	GROMMET,PLASTIC	EA	1
3	32	XDHZZ		425103	24635	CHASSIS.BOTTOM	EA	1
3	33	XDHZZ		MS35223-31	96906	SCREW,MACHINE	EA	16
3	34	PAHZZ	6625-00-135-6708	426200	24635	PRINTED CIRCUIT BOARD ASSEMBLY	EA	1
3	35	XOHZZ		423103	24635	PLATE.SIOEBINNER,RIGHT HAND	EA	1
3	36	XDHZZ		425300	24635	COMPONENT BOARD ASSEMBLY	EA	1
3	37	XDHZZ		425102	24635	BRACKET,ANGLE	EA	8
3	38	XDHZZ		424406	24635	CHASSIS,REAR	EA	1
3	39	XDHZZ		426301	24635	TERMINAL BOARD	EA	1
3	40	XDHZZ		423104	24635	GROMMET,PLASTIC	EA	1

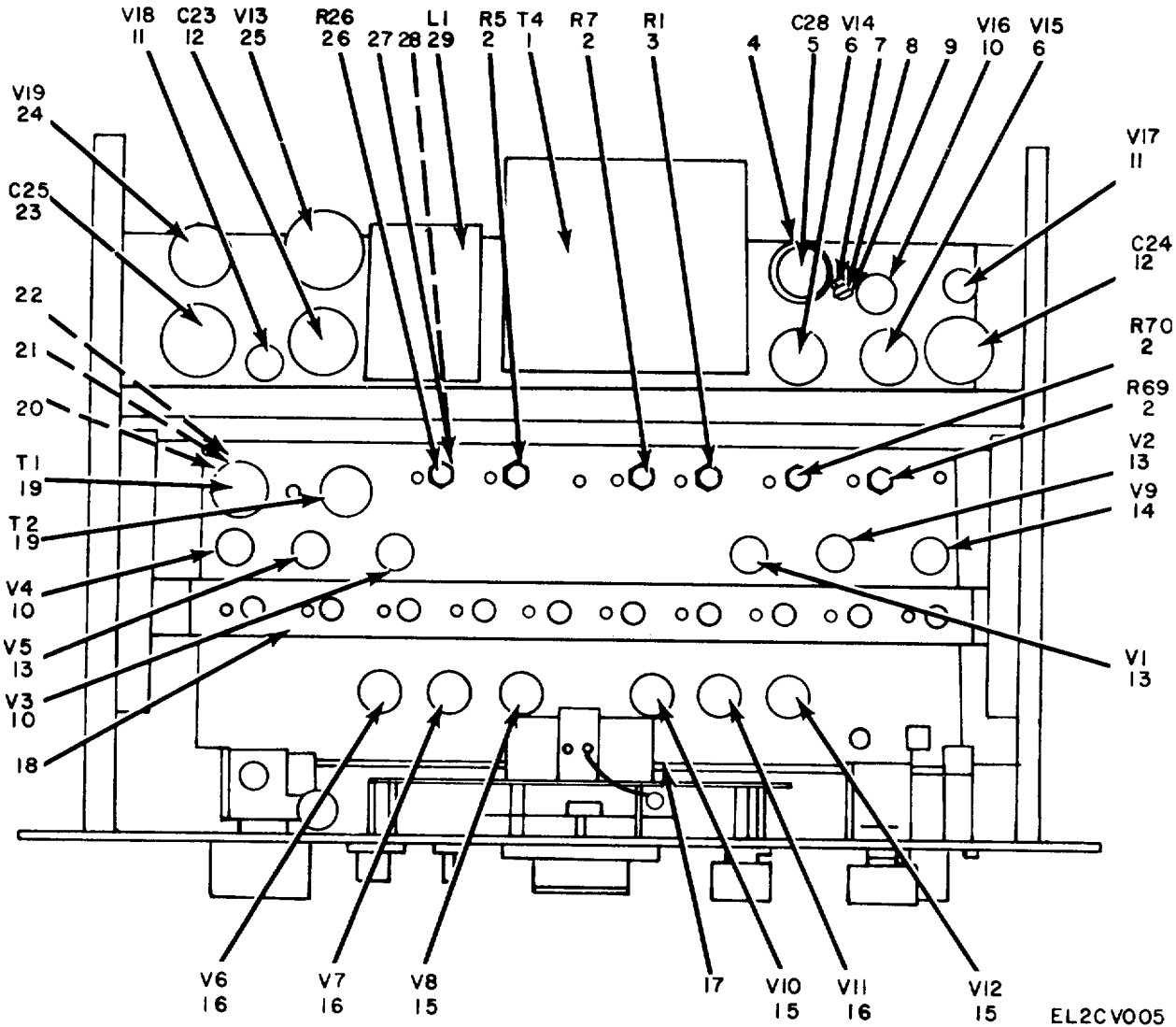
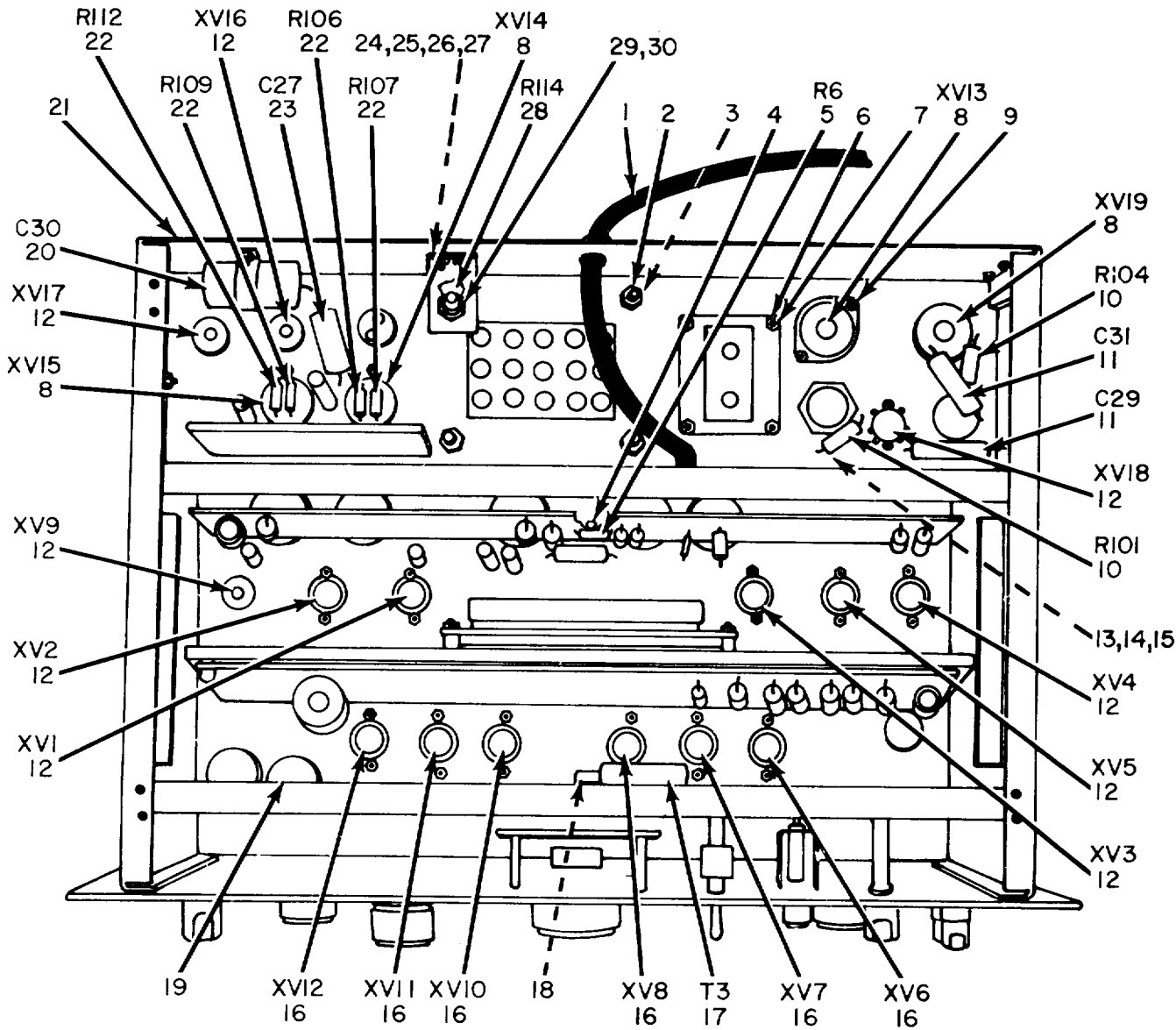


Figure 4. Generator, Signal SG-321B/U, Top View.

## SECTION II

TM 11-6625-822-40P

(1) ILLUSTRATION		(2)	(3)	(4)	(5)	(6) DESCRIPTION	(7)	(8)
(a) FIG NO.	(b) ITEM NO.	SMR CODE	NATIONAL STOCK NUMBER	PART NUMBER	FSCM	USABLE ON CODE	U/M	QTY INC IN UNIT
4	1	PAHZZ	5950-00-491-8949	424402	24635	TRANSFORMER.POWER	EA	1
4	2	PAHZZ	5905-00-581-6187	RA20NASDS02A	81349	RESISTOR,VARIABLE	EA	4
4	3	PAHZZ	5905-00-552-2265	RV4NAYSDO05A	81349	RESISTOR,VARIABLE	EA	1
4	4	XDHZZ		423016	24635	CLAMP,LOOP	EA	1
4	5	XDHZZ		CE31C07OR	81349	CAPACITOR,FIXEODELECTROLYTIC	EA	1
4	6	PAOZZ	5960-00-262-0151	6AU5GT	81349	ELECTRON TUBE	EA	2
4	7	XDHZZ	5305-00-207-0763	MS35223-28	96906	SCREW,MACHINE	EA	4
4	8	XDHZZ	5310-00-209-0788	MS35335-30	96906	WASHER,LOCK	EA	11
4	9	XDHZZ	5310-00-934-9747	MS35649-262	96906	NUT,PLAIN,HEXAGON	EA	11
4	10	PAOZZ	5960-00-179-3710	6AU6WC	81349	ELECTRON TUBE	EA	3
4	11	PAOZZ	5960-00-503-4880	OA2	81349	ELECTRON TUBE	EA	2
4	12	XDHZZ		CE41C200R	81349	CAPACITOR,FIXED,ELECTROLYTIC	EA	2
4	13	PAOZZ	5960-00-879-5078	6AL5W16097	81349	ELECTRON TUBE	EA	3
4	14	PAOZZ	5960-00-557-6780	6C4WA	81349	ELECTRON TUBE	EA	3
4	15	XDOZZ		12AU7A	81349	ELECTRON TUBE	EA	3
4	16	PAOZZ	5960-00-827-8782	12AX7	81349	ELECTRON TUBE	EA	3
4	17	XDHZZ		424300	24635	CHASSIS ASSEMBLY,FRONT	EA	1
4	18	XDHZZ		425000	24635	CHASSIS ASSEMBLY, TOP	EA	1
4	19	PAHZZ	5950-00-491-8948	424301	24635	TRANSFORMER,PULSE	EA	2
4	20	XDHZZ		424305	24635	GROMMET,PLASTEC	EA	1
4	21	XDHZZ		424304	24635	GROMMET,PLASTIC	EA	1
4	22	XDHZZ		424303	24635	GROMMET,PLASTIC	EA	1
4	23	XDHZZ		CE42C200R	81349	CAPACITOR,FIXED,ELECTROLYTIC	EA	11
4	24	PAOZZ	5960-00-180-3565	OA3	81349	ELECTRON TUBE	EA	1
4	25	PAOZZ	5960-00-642-8341	5U48B	81349	ELECTRON TUBE	EA	1
4	26	PAHZZ	5905-00-552-2859	RV4NAYSDSOIA	81349	RESISTOR,VARIABLE	EA	1
4	27	XDHZZ	5310-00-056-3395	NS35649-2382	96906	NUT,PLAIN,HEXAGON	EA	6
4	28	XDHZZ	5310-00-595-7237	MS35333-42	96906	WASHER,LOCK	EA	6
4	29	XDHZZ		424407	24635	REACTOR	EA	1



EL2CV006

Figure 5. Generator, Signal SG-321B/U, Bottom View of Chassis.

## SECTION II

TM 11-6625-822-40P

(1) ILLUSTRATION		(2)	(3)	(4)	(5)	(6) DESCRIPTION	(7)	(8)
(a) FIG NO.	(b) ITEM NO.	SMR CODE	NATIONAL STOCK NUMBER	PART NUMBER	FSCM	USABLE ON CODE	U/M	QTY INC IN UNIT
5	1	XDHZZ		424411	24635	CABLE,POWER	EA	1
5	2	XDHZZ	5310-00-997-1888	M535649-2252	96906	NUT,PLAIN,HEXAGON	EA	1
5	3	XDHZZ		MS3535-33	96906	HASHERBLOCK	EA	1
S	4	XDHZZ		424408	24635	TERMINAL,LUG	EA	2
5	5	PAHZZ	5905-00-081-0532	RN7001432F	81349	RESISTOR,FIXED,COMPOSITION	EA	1
5	6	XDHLZ	5310-00-209-0788	MS35335-30	96906	WASHER,LOCK	EA	15
5	7	XDHZZ	5310-00-934-9747	MS35649-262	96906	NUT,PLAIN,HEXAGON	EA	17
5	8	PAHZZ	5935-00-935-2231	TSIO1IPO	81349	SOCKET,ELECTRON TUBE	EA	4
5	9	XDHZZ	5305-00-207-0763	MS35223-28	96906	SCREW,MACHINE	EA	37
5	10	PAHZZ	5905-00-279-1954	RC42GF154J	81349	RESISTOR.FIXED,COMPOSITION	EA	2
S	11	XDHZZ		CP04AIKE104K3	81349	CAPACITOR.FIXEDOPAPER	EA	2
5	12	PAHZZ	5935-00-172-4923	TS102P03	81349	SOCKETBELECTRON TUBE	EA	9
5	13	XDHZZ	5305-00-638-3438	MS35223-15	96906	SCREW.MACHINE	EA	5'
5	14	XDHZZ	5310-00-616-3554	NS35335-29	96906	WASHER,LOCK	EA	30
5	15	XDHZZ	5310-00-934-9739	NS35649-242	96906	NUT,PLAIN,HEXAGON	EA	30
5	16	PAHZZ	5935-00-892-8987	TS103P03	81349	SOCKET,ELECTRON TUBE	EA	6
5	17	PAHZZ	5950-00-491-6529	424504	24635	TRANSFORMER PULSE	EA	1
5	18	XDHZZ	5310-00-082-1404	MS27183-6	96906	WASHER,FLAT	EA	2
5	19	XDHZZ		425100	24635	CHASSIS ASSEMBLY,BOTTOM	EA	1
5	20	PAHZZ	5910-00-556-9455	CP04A1KE105K1	81349	CAPACITOR,FIXED,PAPER	EA	1
5	21	XDHZZ		424400	24635	CHASSIS ASSEMBLY,REAR	EA	1
5	22	PAHZZ	5905-00-186-3008	AIL-R-11	81349	RESISTOR,FIXED,COMPOSITIDN	EA	4
5	23	XDHZZ		CPO4AIKE224K3	81349	CAPACITOR,FIXEDBPAPER	EA	1
5	24	XOHZZ	5305-00-576-7519	MS35223-46	96906	SCREW,MACHINE	EA	4
5	25	XOHZZ	5310-00-809-8544	MS27183-7	96906	WASHER,FLAT	EA	4
5	26	XDHZZ	5310-00-596-7693	MS35335-31	96906	WASHER,LOCK	EA	4
5	27	XDHZZ	5310-00-938-2013	MS35649-224	96906	NUT,PLAIN,HEXAGON	EA	4
5	28	PAHZZ	5905-00-539-1559	RV4NAYSD253A	81349	RESISTOR,VARIABLE	EA	1
5	29	XDHZZ	5310-00-056-3395	MS35649-2382	96906	NUT,PLAIN,HEXAGON	EA	1
5	30	XDHZZ	5310-00-595-7237	MS35333-42	96906	WASHER.LOCK	EA	1

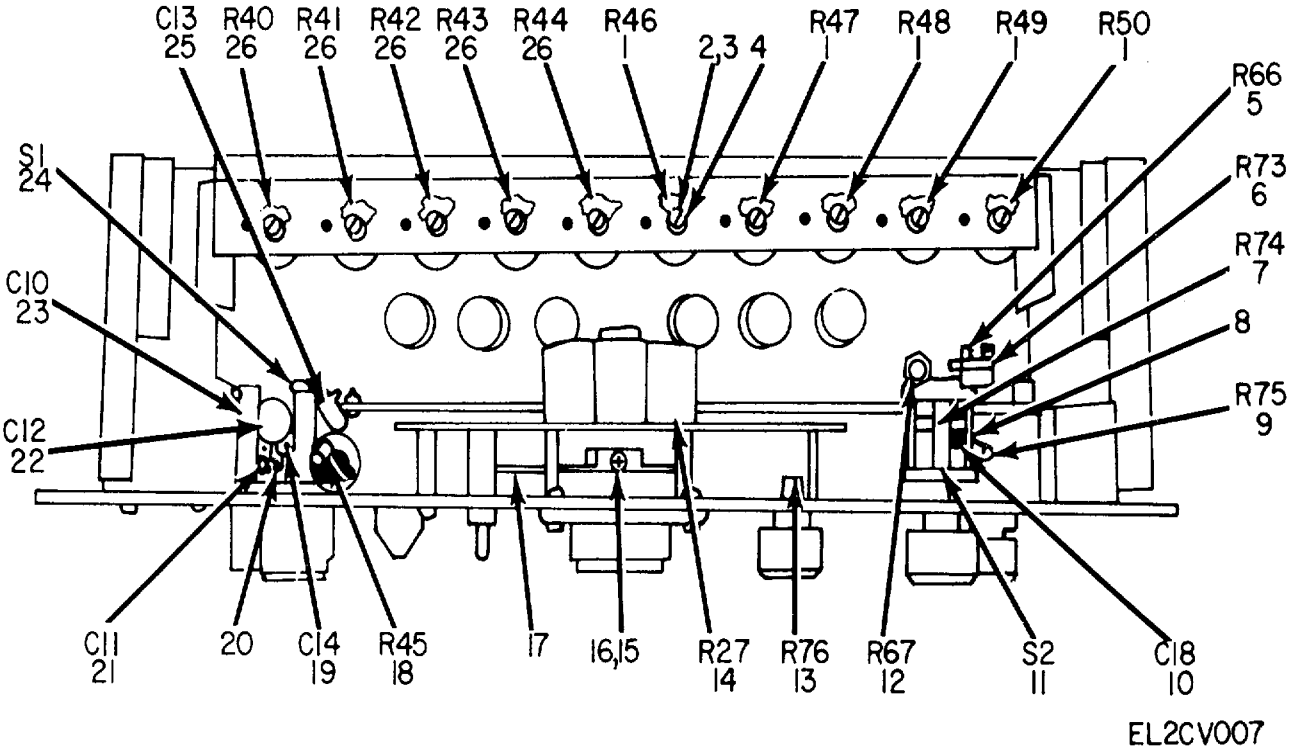


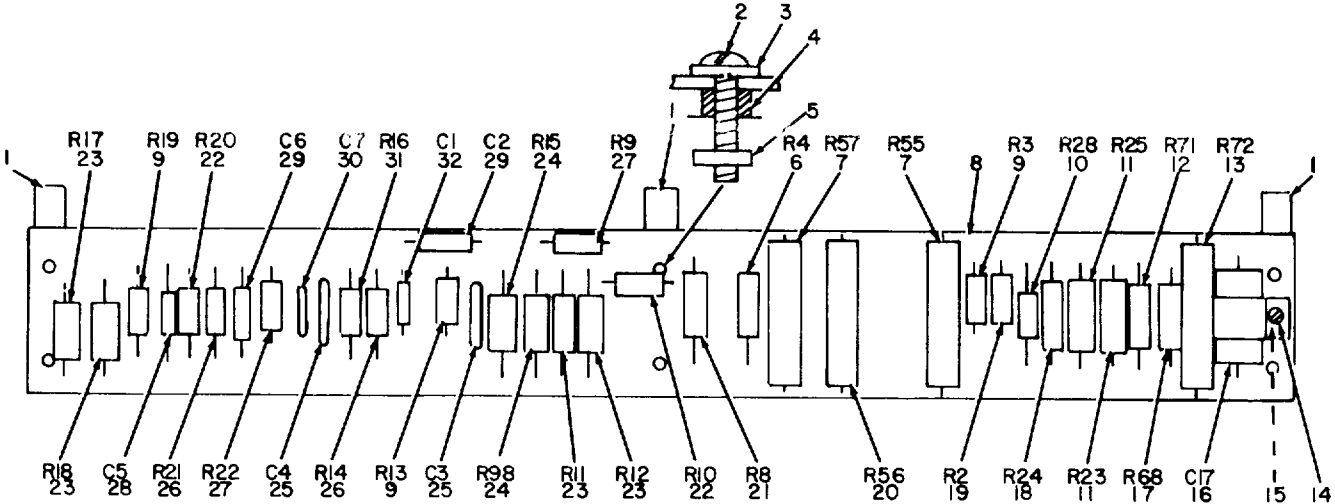
Figure 6. Generator, Signal SG-321B/U, Top View of Front Panel.

## SECTION II

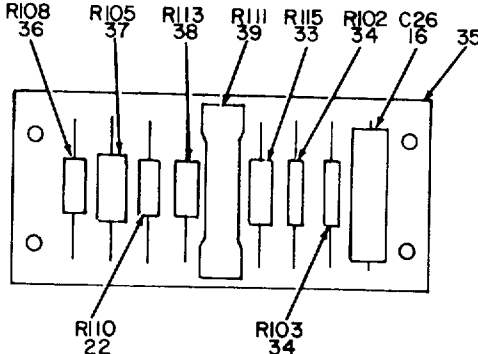
TM 11-6625-822-40P

(1) ILLUSTRATION		(2)	(3)	(4)	(5)	(6) DESCRIPTION	(7)	(8)
(a) FIG NO.	(b) ITEM NO.	SMR CODE	NATIONAL STOCK NUMBER	PART NUMBER	FSCM	USABLE ON CODE	U/M	QTY INC IN UNIT
6	1	PAHZZ	5905-00-643-5626	RV4NAYS02A	81349	RESISTOR,VARIABLE	EA	5
6	2	XDHZZ		425003	24635	NUT,SELF LOCKING,HEXAGON	EA	5
6	3	XDHZZ	5310-00-056-3395	MS35649-2382	96906	NUT,PLAIN,HEXAGON	EA	12
6	4	XDHZZ	5310-00-595-7237	NS35333-42	96906	WASHER,LOCK	EA	12
6	5	PAHZZ	5905-00-185-8490	RC20GF475J	81349	RESISTOR,FIXED,COMPOSITION	EA	1
6	6	PAHZZ	5905-00-539-1559	RV4NAYS0253A	81349	RESISTOR,VARIABLE	EA	1
6	7	PAHZZ	5905-00-062-5677	RN6506812F	81349	RESISTOR,FIXED,FILM	EA	1
6	8	XDHZZ		423013	24635	TERMINAL BOARD	EA	1
6	9	PAHZZ	5905-00-957-6803	RN70D3322F	81349	RESISTOR,FIXED,FILM	EA	1
6	10	XDHZZ		CM2OE47LJ	81349	CAPACITOR,FIXED,MICA	EA	1
6	11	XDFRZ		423009	24635	SWITCH,ROTARY	EA	1
6	12	PAHZZ	5905-00-893-9499	RV4NAYS0504A	81349	RESISTOR,VARIABLE	EA	1
6	13	PAHZZ	5905-00-484-8014	423010	24635	RESISTOR,VARIABLE	EA	1
6	14	PAHZZ	5905-00-4848015	424005	24635	RESISTOR,VARIABLE	EA	1
6	15	XDHZZ		MS35223-27	96906	SCREWMACHINE	EA	3
6	16	XDHZZ	5310-00-209-0788	MS35335-30	96906	WASHER,LOCK	EA	58
6	17	XDHZZ		424302	24635	CHASSIS,FRONT	EA	1
6	18	XDHZZ		RN70DS114F	81349	RESISTOR,FIXED,FILM	EA	1
6	19	PAHZZ	5910-00-578-1623	CV11C450	81349	CAPACITOR,VARIABLE,CERAMIC	EA	1
6	20	XDHZZ		424403	24635	TERMINAL BOARD	EA	1
6	21	PAHZZ	5910-00-821-4702	CPOSAIKE103K3	81349	CAPACITOR,FIXED,PAPER	EA	1
6	22	XDHZZ		CM20DE102J	81349	CAPACITOR,FIXED,MICA	EA	1
6	23	PAHZZ	5910-00-855-3725	CP12AIKEIO4K3	81349	CAPACITOR,FIXED,PAPER	EA	1
6	24	XDHZZ		423008	24635	SWITCH,ROTARY	EA	1
6	25	PAHZZ	5910-00-264-9432	CMISE750J	81349	CAPACITOR,FIXED,MICA	EA	1
6	26	PAHZZ	5905-00-807-7277	RV4LAYS02058	81349	RESISTOR,VARIABLE	EA	5





E8



E9

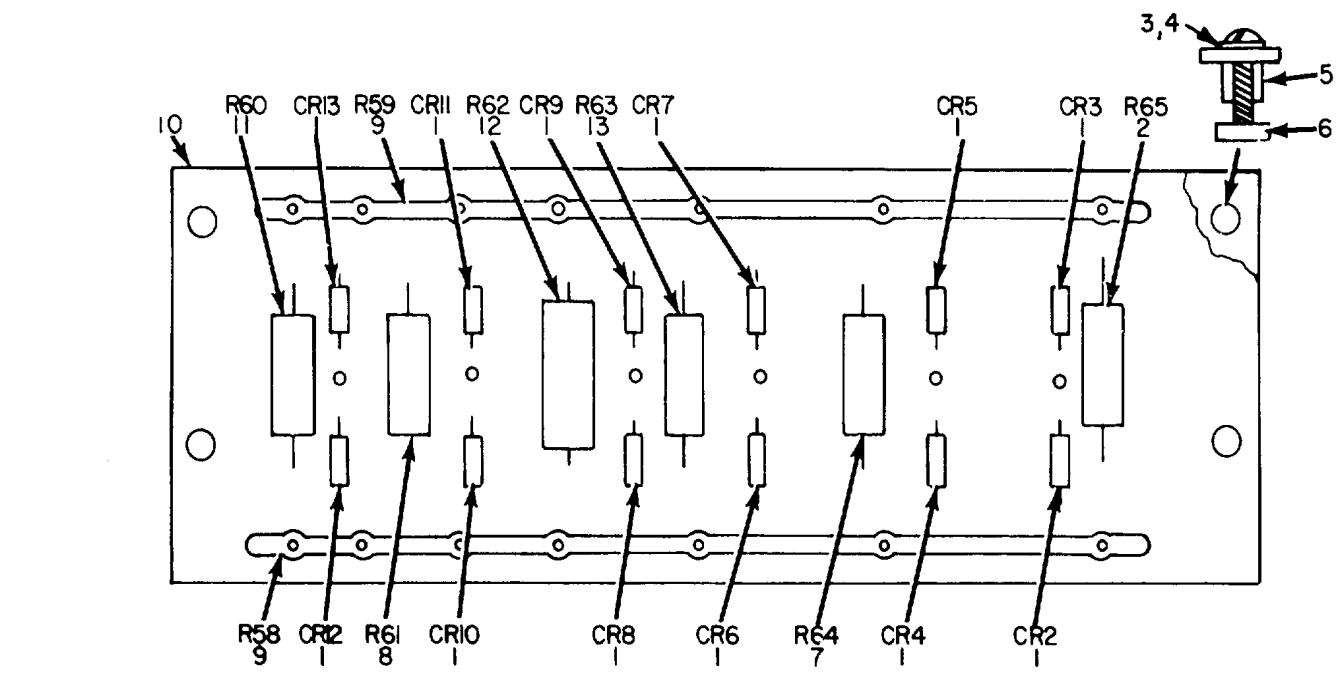
EL2CV008

Figure 7. Generator, Signal SG-321B/U, Printed Circuit Board Assemblies E8 and E9.

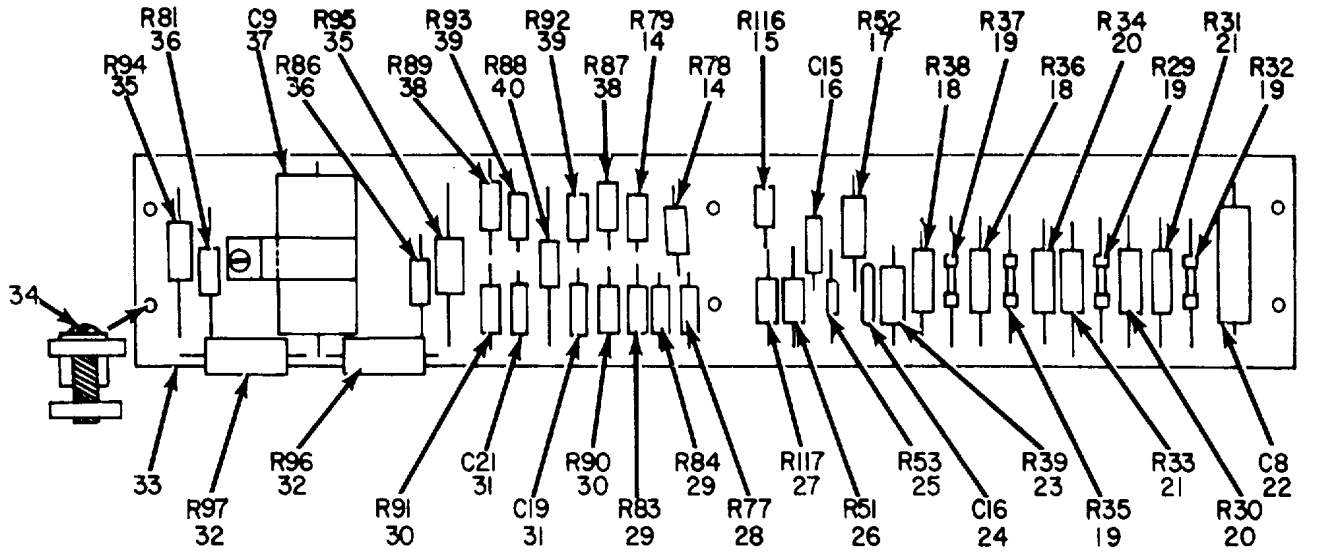
## SECTION II

TM 11-6625-822-40P

(1) ILLUSTRATION		(2)	(3)	(4)	(5)	(6) DESCRIPTION	(7)	(8)
(a) FIG NO.	(b) ITEM NO.	SMR CODE	NATIONAL STOCK NUMBER	PART NUMBER	FSCM	USABLE ON CODE	U/M	QTY INC IN UNIT
7	1	XDHZZ		425102	24635	BRACKET,ANGLE	EA	3
7	2	XDHZZ		MS35223-33	96906	SCREW,MACHINE	EA	6
7	3	XDHZZ	5310-00-209-0788	NS35223-31	96906	WASHER,LOCK	EA	6
7	4	XDHZZ		425101	24635	SPACER,SLEEVE	EA	6
7	5	XDHZZ	5310-00-934-9747	MS35649-262	96906	NUT,PLAIN,HEXAGON	EA	11
7	6	PAHZZ	5905-00-087-4205	RN7001022F	81349	RESISTOR,FIXED,FILM	EA.	11
7	7	PAHZZ	5905-00-518-6748	RW29V302	81349	RESISTOR,FIXED,WIRE WOUND	EA	2
7	8	PAHZZ	6625-00-135-6705	42520D	24635	PRINTED CIRCUIT BOARD	EA	1
7	9	PAHZZ	5905-00-299-1995	RC32GF334J	81349	RESISTOR,FIXEO,COMPOSITION	EA	3
7	10	PAHZZ	5905-00-552-5057	RC32GF182K	81349	RESISTOR,FIXED,COMPOSITION	EA	1
7	11	XDHZZ		RW74UI452	81349	RESISTOR,FIXED,WIRE WOUND	EA	2
7	12	PAHZZ	5905-00-689-5177	RN7003742F	81349	RESISTOR,FIXED,FILM	EA	1
7	13	XDHZZ		RW29V303	81349	RESISTOR,FIXED,WIRE WOUND	EA	1
7	14	XDHZZ	5305-00-207-0763	MS35223-28	96906	SCREW,MACHINE	EA	5
7	15	XDHZZ	5310-00-209-0788	MS35335-30	96906	WASHER,LOCK	EA	5
7	16	XDHZZ		CPO4AIKE104K3	81349	CAPACITOR,FIXEDOPAPER	EA	2
7	17	PAHZZ	5905-00-957-6803	RN70D3322F	81349	RESISTOR,FIXED,FILM	EA	1
7	18	PAHZZ	5905-00-062-2308	RN70DOS53F	81349	RESISTOR,FIXED,FILM	EA	1
7	19	PAHZZ	5905-00-279-2622	RC32GF335J	81349	RESISTOR,FIXED,CDMPOSITION	EA	1
7	20	PAHZZ	5905-00-85-5658	RW29V242	81349	RESISTOR.FIXED,WIRE WOUND	EA	1
7	21	PAHZZ	5905-00-078-7455	RN70D2742F	81349	RESISTOR,FIXED,FILM	EA	1
7	22	PAHZZ	5905-00-299-2020	RC32GF273J	81349	RESISTOR,FIXED,COMPOSITION	EA	3
7	23	PAHZZ	5905-00-254-7110	RC42GF124J	81349	RESISTOR,FIXED,COMPOSITION	EA	4
7	24	PAHZZ	5905-00-254-7096	RC42GF823J	81349	RESISTOR,FIXED,COMPOSITION	EA	2
7	25	PAHZZ	5910-00-822-5683	CK63AWIO3M	81349	CAPACITOR,FIXED,CERAMIC	EA	2
7	26	PAHZZ	5905-00-299-2019	RC32GF223K	81349	RESISTOR.FIXEDOCOMPOSITION	EA	2
7	27	PAHZZ	5905-00-228-6084	RRCR320123JS	81349	RESISTOR,FIXED,COMPOSITION	EA	2
7	28	PAHZZ	5910-00-264-9424	CM15E390J	81349	CAPACITOR.FIXEO1MICA	EA	1
7	29	XDHZZ		CM20E471J	81349	CAPACITOR,FIXED,MICA	EA	2
7	30	PAHZZ	5910-00-823-1068	CK62AW472M	81349	CAPACITOR,FIXED,CERAMIC	EA	1
7	31	PAHZZ	5905-00-136-8434	RC32GFL22K	81349	RESISTOR,FIXED.COMPOSITION	EA	1
7	32	PAHZZ	5910-00-889-4777	CM15CD820JN3	81349	CAPACITOR,FIXED.MICA	EA	1
7	33	PAHZZ	5905-0D-983-8182	RN70DI823F	81349	RESISTOR,FIXED,FILM	EA	1
7	34	PAHZZ	5905-00-279-1954	RC42GF154J	81349	RESISTOR,FIXED,COMPOSITION	EA	2
7	35	XDHZZ		426300	24635	COMPONENT BOARD	EA	1
7	36	PAHZZ	5905-00-247-8730	RRCR32G394JS	81349	RESISTOR,FIXED,COMPOSITION	EA	1
7	37	PAHZZ	5905-00-279-1930	RC42GF224J	81349	RESISTOR,FIXED,CONPOSITION	EA	1
7	38	PAHZZ	5905-00-279-4302	RC32GF274J	81349	RESISTOR,FIXED,COMPOSITION	EA	1
7	39	XDHZZ		RW29VZ53	81349	RESISTOR,FIXED,WIRE WOUND	EA	1



E7



E6

EL2CV009

Figure 8. Generator, Signal SG-321B/U, Printed Circuit Board Assemblies E7 and E6.

## SECTION II

TM 11-6625-822-40P

(1) ILLUSTRATION		(2)	(3)	(4)	(5)	(6) DESCRIPTION	(7)	(8)
(a) FIG NO.	(b) ITEM NO.	SMR CODE	NATIONAL STOCK NUMBER	PART NUMBER	FSCM	USABLE ON CODE	U/M	QTY INC IN UNIT
8	1	PAHZZ	5961-00-840-5466	IN4858	81349	SEMICONDLCTOR DEVICE, DIODE	EA	12
8	2	PAHZZ	5905-00-810-2962	RN65D2153F	81349	RESISTOR, FIXED, FILM	EA	1
8	3	PAHZZ	5305-00-207-0763	MS35223-28	96906	SCREW, MACHINE	EA	4
8	4	PAHZZ	5310-00-209-0788	MS35335-30	96906	WASHER, LOCK	EA	8
8	5	XDHZZ		425101	24635	SPACER, SLEEVE	EA	8
8	6	PAHZZ	5310-00-934-9747	MS35649-262	96906	NUT, PLAIN, HEXAGON	EA	8
8	7	PAHZZ	5905-00-068-5185	RN65D1153F	81349	RESISTOR, FIXED, FILM	EA	1
8	8	PAHZZ	5905-00-079-6536	RN65D1332F	81349	RESISTOR, FIXED, FILM	EA	1
8	9	PAHZZ	5905-00-481-8563	426201	24635	RESISTOR NETWORK	EA	2
8	10	PAHZZ	6625-00-135-6707	426202	24635	PRINTED CIRCUIT BOARD	EA	1
8	11	PAHZZ	5905-00-857-8734	RN65D9310F	81349	RESISTOR, FIXED, FILM	EA	1
8	12	PAHZZ	5905-00-087-5883	RN6503742F	81349	RESISTOR, FIXED, FILM	EA	1
8	13	PAHZZ	5905-00-811-4802	RN65D7152F	81349	RESISTOR, FIXEODFILM	EA	1
8	14	PAHZZ	5905-00-299-2015	RC32GF393K	81349	RESISTOR, FIXED, COMPOSITION	EA	2
8	15	PAHZZ	5905-00-279-2597	RC32GF184K	81349	RESISTOR, FIXED, COMPOSITION	EA	1
8	16	XDHZZ		CM7OE821J	81349	CAPACITOR, FIXED, MICA	EA	1
8	17	PAHZZ	5905-00-279-1954	RC42GF154J	81349	RESISTOR, FIXED, COMPOSITION	EA	1
8	18	PAHZZ	5905-00-279-2652	RC32GF155J	81349	RESISTOR, FIXED, COMPOSITION	EA	2
8	19	PAHZZ	5905-00-078-8801	RN70D4053F	81349	RESISTOR, FIXED, FILM	EA	4
8	20	PAHZZ	5905-00-087-0560	RN70D2164F	81349	RESISTOR, FIXED, FILM	EA	2
8	21	PAHZZ	5905-00-764-4049	RN70D1034F	81349	RESISTOR, FIXEODFILM	EA	2
8	22	XDHZZ		CP04AIKE104K3	81349	CAPACITOR, FIXED, PAPER	EA	1
8	23	PAHZZ	5905-00-279-2675	RC42GF333J	81349	RESISTOR, FIXED, COMPOSITION	EA	1
8	24	PAHZZ	5910-00-822-5683	CK63AW103M	81349	CAPACITOR, FIXED, CERAMIC	EA	1
8	25	PAHZZ	5905-00-279-3502	RC20GF123J	81349	RESISTOR, FIXED, COCPOSITION	EA	1
8	26	PAHZZ	5905-00-279-2622	RC32GF335J	81349	RESISTOR, FIXED, COHPOSITION	EA	1
8	27	PAHZZ	5905-00-299-2000	RC32GF224J	81349	RESISTOR, FIXED, COMPOSITION	EA	1
8	28	PAHZZ	5905-00-279-2553	RC32GF122J	81349	RESISTOR, FIXED, COMPOSITION	EA	1
8	29	PAHZZ	5905-00-279-4302	RC32GF274J	81349	RESISTOR, FIXED, COMPOSITION	EA	2
8	30	PAHZZ	5905-00-247-8684	RRC32GIO5JS	81349	RESISTOR, FIXED, COMPOSITION	EA	2
8	31	PAHZZ	5910-00-666-6197	CN15E220J	81349	CAPACITOR, FIXED, MICA	EA	2
8	32	PAHZZ	5905-00-989-9009	RN70D1582F	81349	RESISTOR, FIXED, FILM	EA	2
8	33	PAHZZ	6625-00-191-9285	426101	24635	PRINTED CIRCUIT BOARD	EA	1
8	34	XDHZZ		NS35223-31	96906	SCREW, MACHINE	EA	4
8	35	PAHZZ	5905-00-254-1777	RC42GF273J	81349	RESISTOR, FIXED, COMPOSITION	EA	2
8	36	PAHZZ	5905-00-247-8730	RRC320394JS	81349	RESISTOR, FIXED, COMPOSITION	EA	2
8	37	PAHZZ	5910-00-683-7397	CPIOAKE1OS5K3	81349	CAPACITOR, FIXED, PAPER	EA	1
8	38	PAHZZ	5905-00-299-1995	RC32GF334J	81349	RESISTOR, FIXED, COMPOSITION	EA	2
8	39	PAHZZ	5905-00-279-2624	RC32GF225J	81349	RESISTOR, FIXED, COMPOSITION	EA	2
8	40	PAHZZ	5905-00-279-1715	RC32GF564J	81349	RESISTOR, FIXED, COMPOSITION	EA	1

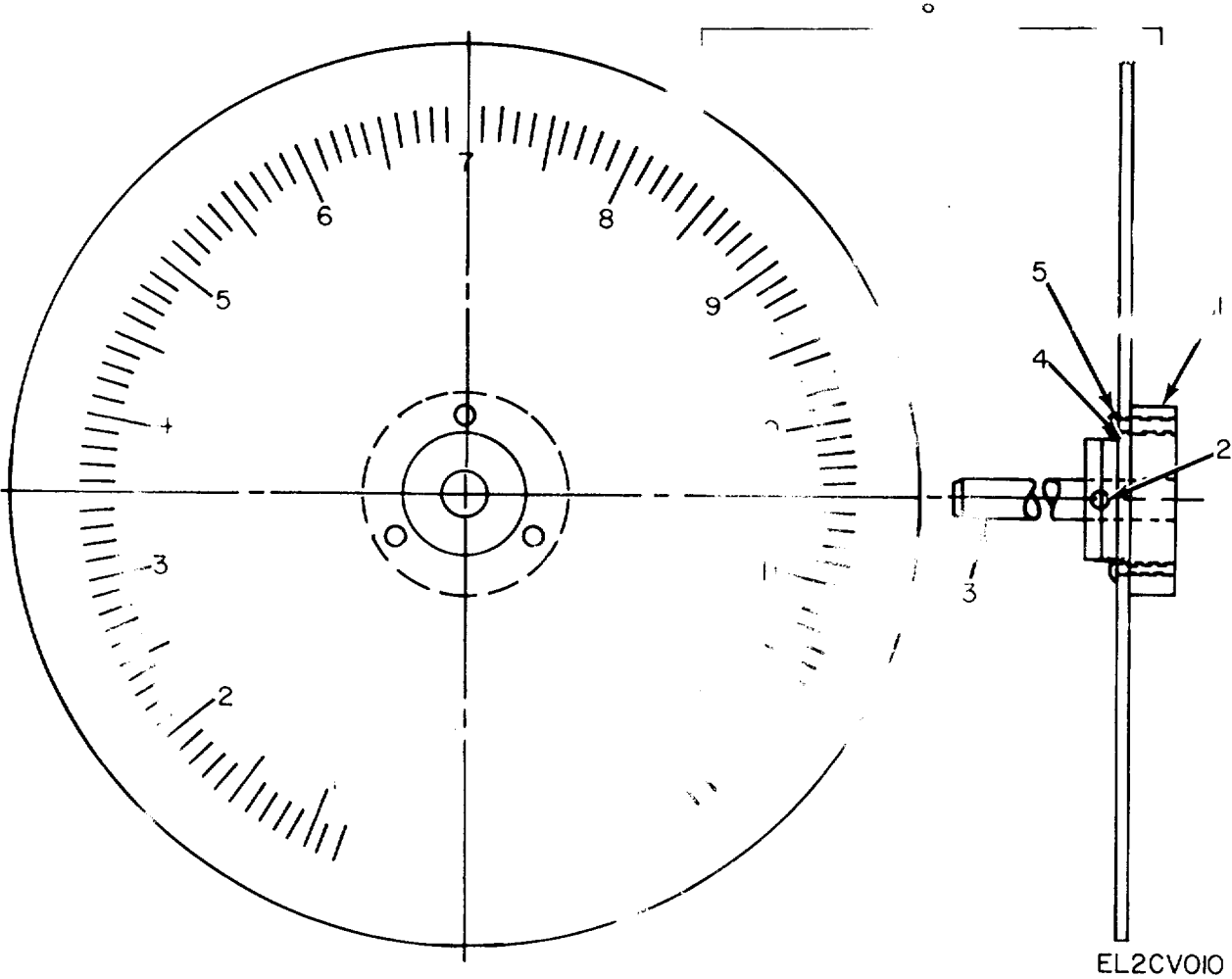


Figure 9. Generator, Signal SG-321B/U, Coarse Tuning Assembly.

SECTION II

TM 11-6625-822-40P

(1) ILLUSTRATION		(2)	(3)	(4)	(5)	(6) DESCRIPTION	(7)	(8)
(a) FIG NO.	(b) ITEM NO.	SMR CODE	NATIONAL STOCK NUMBER	PART NUMBER	FSCM	USABLE ON CODE	U/M	QTY INC IN UNIT
9	1	XDHZZ		425501	24635	HUB,DIAL	EA	1
9	2	XDHZZ		425503	24635	PIN,STRAIGHT,HEADLESS	EA	1
9	3	PAHZZ	3040-00-133-5881	425504	24635	SHAFT,DIAL	EA	1
9	4	XDHZZ	5310-00-616-3554	NS35335-29	96906	WASHER,LOCK	EA	3
9	5	XDHZZ		NS35223-13	96906	SCREW,MACHINE	EA	3
9	6	PAHZZ	5355-00-144-6813	425502	24635	DIAL.FREQUENCY,RANGE	EA	1
					<b>23</b>			

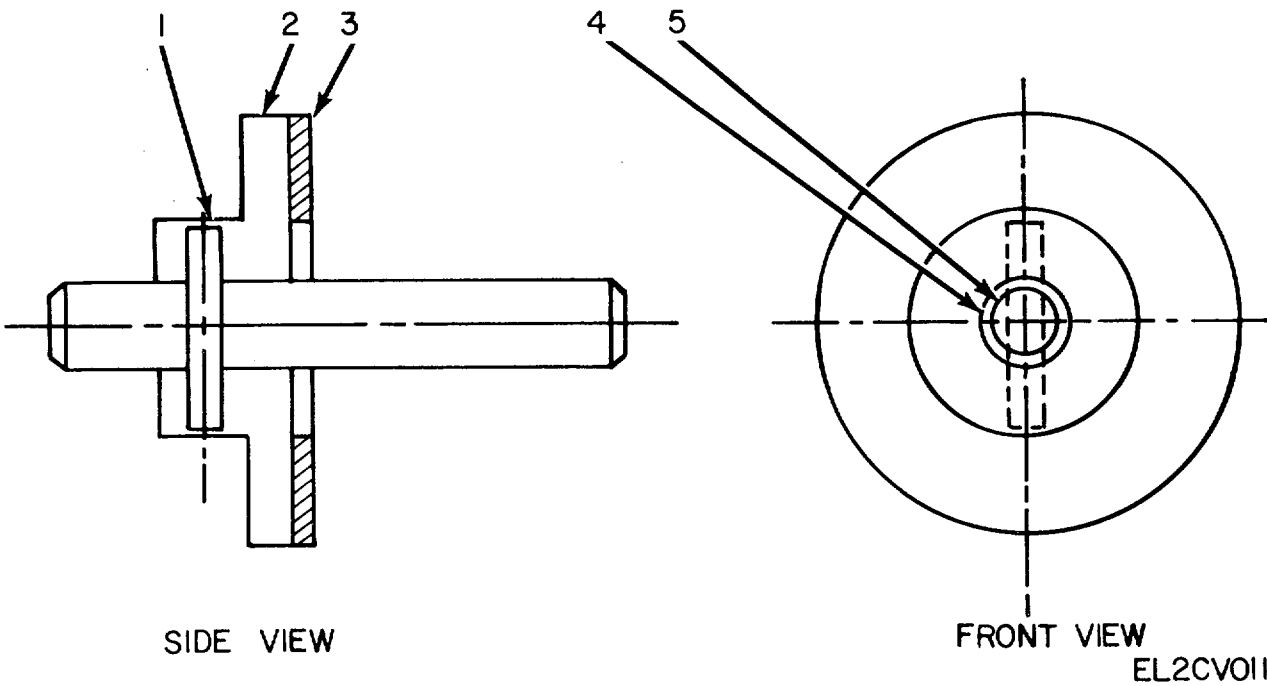


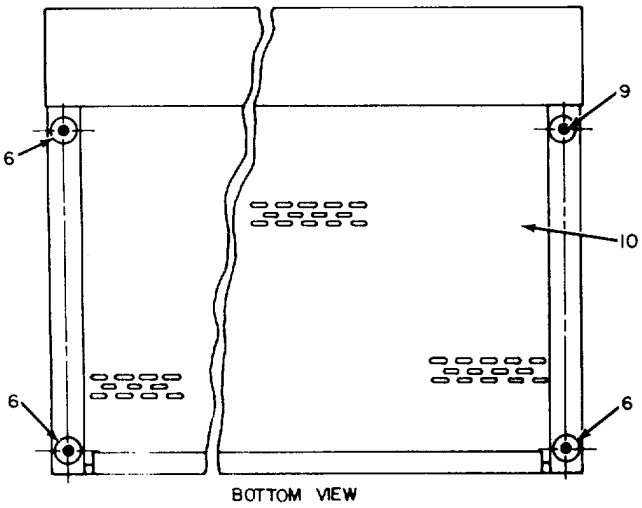
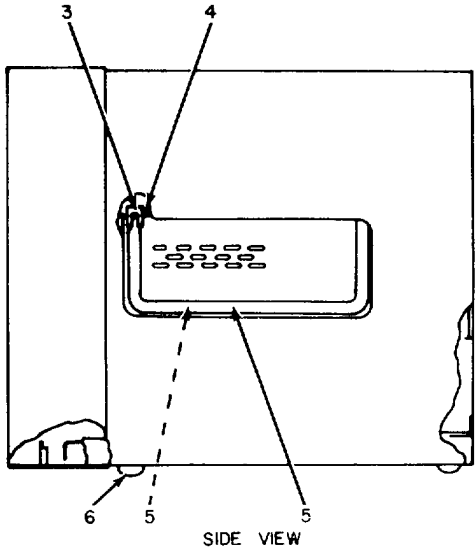
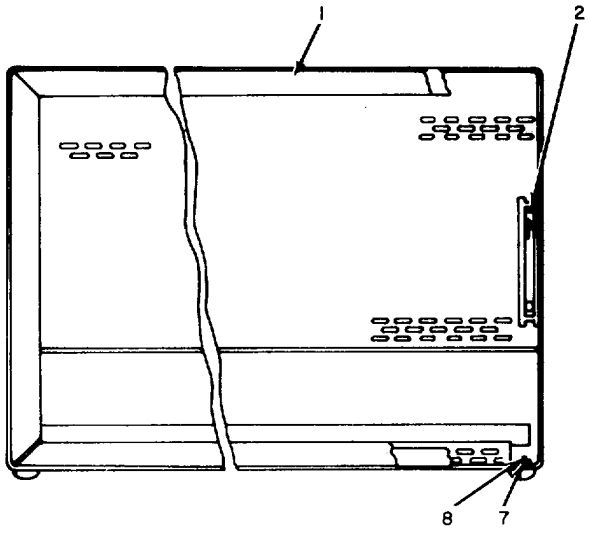
Figure 10. Generator, Signal SG-321B/U, Fine Tuning Assembly.

SECTION II

TM 11-6625-822-40P

(1) ILLUSTRATION		(2)	(3)	(4)	(5)	(6)	(7)	(8)
(a) FIG NO.	(b) ITEM NO.	SMR CODE	NATIONAL STOCK NUMBER	PART NUMBER	FSCM	DESCRIPTION  USABLE ON CODE	U/M	QTY INC IN UNIT
10	1	XDHZZ		425403	24635	PIN, STRAIGHT. HEAOLESS	EA	1
10	2	XDHZZ		425402	24635	HUB, FRICTION	EA	1
10	3	XDHZZ		425401	24635	DISC, FRICTION	EA	1
10	4	XDHZZ		424008	24635	SPRINC, HELICAL, COMPRESSION	EA	1
10	5	XDHZZ		425404	24635	SHAFT, HUB	EA	1
					<b>25</b>			





EL2CVO12

Figure 11. Generator, Signal SG-321B/U, Case Assembly.

## SECTION II

TM 11-6625-822-40P

(1) ILLUSTRATION		(2)	(3)	(4)	(5)	(6) DESCRIPTION	(7)	(8)
(a) FIG NO.	(b) ITEM NO.	SMR CODE	NATIONAL STOCK NUMBER	PART NUMBER	FSCM	USABLE ON CODE	U/M	QTY INC IN UNIT
11	1	XDHZZ		422003	24635	CASE,SIGNAL GENERATOR	EA	1
11	2	XDHZZ		422006	24635	SCREHWCAP	EA	4
11	3	XDHZZ		422004	24635	CLEVIS,HANDLE	EA	1
11	4	XDHZZ		422005	24635	PIN,SPRING	EA	1
11	5	XDHZZ		422001	24635	HANDLE,CASE	EA	2
11	6	PAHZZ	5340-00-178-1343	42202	24635	BUHPER,RUBBER	EA	4
11	7	XDHZZ	5310-00-596-7693	MS35335-31	96906	IWASHER,LOCK	EA	36
11	8	XDHZZ	5310-00-938-2013	MS35649-224	96906	NUT,PLAIN.HEXAGON	EA	40
11	9	XDHZZ		MS35223-47	96906	SCREWIMACHINE	EA	4
11	10	XDHZZ		MD659779	80063	GRILLEBBOTTON	EA	1
					27			

SECTION IV

TM 11-6625-822-40P

NATIONAL STOCK NUMBER AND PART NUMBER INDEX

NOTE: LATEST NATIONAL STOCK NUMBER AND PART NUMBER ASSIGNMENTS ARE INCLUDED AT END OF INDEX

PART NUMBER	FSCM	FIG. NO.	ITEM NO.	PART NUMBER	FSCM	FIG. NO.	ITEM NO.
5310-00-056-3395	2		15	5905-00-518-6748		7	7
5310-00-056-3395	4		27	5905-00-539-1559		5	28
5310-00-056-3395	5		29	5905-00-539-1559		6	6
5310-00-056-3395	6		3	5905-00-539-5013		2	13
5920-00-060-2424	2		23	5905-00-552-2265		4	3
5905-00-062-2308	7		18	5905-00-552-2859		4	26
5905-00-062-5677	6		7	5905-00-552-5057		7	10
5905-00-068-5185	8		7	5960-00-557-6780		4	14
5905-00-078-7455	7		21	5310-00-559-0070		2	4
5905-00-078-8801	8		19	5305-00-576-7519		3	16
5905-00-079-6536	8		8	5305-00-576-7519		5	24
5905-00-081-0532	5		5	5910-00-578-1623		6	19
5310-00-082-1404	5		18	5310-00-579-5554		1	5
5905-00-087-0560	8		20	5905-00-581-6187		4	2
5905-00-087-4205	7		6	5310-00-595-7237		2	14
5905-00-087-5883	8		12	5310-00-595-7237		4	28
6625-00-135-6701	2		18	5310-00-595-7237		5	30
6625-00-135-6704	2		37	5310-00-595-7237		6	4
6625-00-135-6705	7		8	5310-00-596-7693		2	34
6625-00-135-6706	3		28	5310-00-596-7693		3	5
6625-00-135-6707	8		10	5310-00-596-7693		5	26
6625-00-135-6708	3		34	5310-00-596-7693	11		7
5355-00-144-6813	9		6	5310-00-616-3554		3	12
6240-00-155-8706	2		21	5310-00-616-3554		5	14
				5310-00-616-3554		9	4
5935-00-172-4923	5		12	5305-00-638-3358		2	31
5340-00-178-1343	11		6	5305-00-638-3438		3	11
5960-00-188-3565	4		24	5305-00-638-3438		5	13
6625-00-191-9285	8		33	5960-00-642-8341		4	25
6625-00-191-9292	3		30	5905-00-643-5626		6	1
5305-00-207-0763	3		25	5930-00-655-1514		2	19
5305-00-207-0763	4		7	5910-00-666-6197		8	31
5305-00-207-0763	5		9	5910-00-683-7397		8	37
5305-00-207-0763	7		14	5905-00-689-5177		7	12
5305-00-207-0763	8		3	5905-00-764-4049		8	21
5310-00-209-0788	3		26	5905-00-807-7277		2	26
5310-00-209-0788	4		8	5905-00-807-7277		6	26
5310-00-209-0788	5		6	5310-00-809-8544		2	32
5310-00-209-0788	6		16	5310-00-809-8544		3	4
5310-00-209-0788	7		3	5310-00-809-8544		5	25
5310-00-209-078B	7		15	5905-00-810-2962		8	2
5310-00-209-0788	8		4	5905-00-811-4802		8	13
5905-00-254-1777	8		35	5910-00-821-4702		6	1
5905-00-254-7096	7		24	5910-00-822-5683		7	25
5905-00-254-7110	7		23	5910-00-822-5683		8	24
5960-00-262-0151	4		6	5910-00-823-1068		7	30
5910-00-264-9424	7		28	5905-00-845-5658		7	20
5910-00-264-9432	6		25	5910-00-855-3725		6	23
5905-00-279-1930	7		37	5905-00-857-8734		8	11
5905-00-279-1954	5		10	5935-00-892-8987		5	16
5905-00-279-1954	7		34	5905-00-893-9499		6	12
5905-00-279-1954	8		17	5310-00-934-9738		1	6
5905-00-279-2553	8		28	5310-00-934-9739		2	10
5905-00-279-2597	8		15	5310-00-934-9739		3	13
5905-00-279-2622	7		19	5310-00-934-9739		5	15
5905-00-279-2622	a		26	5310-00-934-9747		3	27
5905-00-279-2624	8		39	5310-00-934-9747		4	9
5905-00-279-2675	8		23	5310-00-934-9747		5	7
5905-00-279-3502	8		25	5310-00-934-9747		7	5
5905-00-299-2000	8		27	5310-00-934-9747		8	6
5905-00-299-2015	8		14	5310-00-938-2013		2	5
5905-00-299-2019	7		26	5310-00-938-2013		5	27
5905-00-299-2020	7		22	5310-00-938-2013	11		8
3120-00-400-7688	2		17	5310-00-951-4679		2	9
6625-00-450-3569	a		36	5905-00-957-6803		6	9
5905-00-481-8563	8		9	5905-00-957-6803		7	17
5905-00-484-8014	6		13	5310-00-982-6580		2	35
5905-00-484-801	6		14	5905-00-983-8182		7	33
5950-00-491-6529	5		17	5905-00-989-9009		8	32
5950-00-491-8948	4		19	5310-00-997-1888		5	2

PART NUMBER	FSCM	FIG. NO.	ITEM NO.	PART NUMBER	FSCM	FIG. NO.	ITEM NO.
CE31CO70R	81349	4	5	CK63AW103M	81349	7	25
CE41C200R	81349	4	12	CK63AI103M	81349	8	24
CE42C200R	81349	4	23	CS15E220J	81349	8	31
CK62AW472M	81349	7	30	CNISE390J	81349	7	28

## SECTION IV

TM 11-6625-822-40P

STOCK NUMBER		NATIONAL STOCK NUMBER AND PART NUMBER INDEX		STOCK NUMBER		FIG.	ITEM
		FIG.	ITEM				
CM15E750J	81349	6	25	MS35649-262	96906	4	9
				MS35649-262	96906	5	7
CM20E102J	81349	6	22	MS35649-262	96906	7	5
CM20E471J	81349	6	10	MS35649-262	96906	8	6
CM20E471J	81349	7	29	RA20NASDS02A	81349	4	2
CM20E821J	81349	8	16				
CP04ALKE104K3	81349	5	11	RC20GF123J	81349	8	25
CPO4AIKE104K3	81349	7	16				
CP04ALKE104K3	81349	8	22				
				RC32GF122J	81349	8	28
				RC32GF122K	81349	2	26
				RC32GF122K	81349	7	31
CP04A1KE224K3	81349	5	23				
CP05A1KE103K3	81349	6	21				
CP10A1KE105K3	81349	8	37				
CP12A1KE104K3	81349	6	23	RC32GF182K	81349	7	10
CVIIC450	81349	6	19	RC32GF184K	81349	8	15
F02G5ROOA	81349	2	23	RC32GF223K	81349	7	26
MS27183-1	96906	2	35	RC32GF224J	81349	8	27
MS27183-3	96906	2	9	RC32GF225J	81349	8	39
HM527183-6	96906	5	18	RC32GF273J	81349	7	22
MS27183-7	96906	2	32				
MS27183-7	96906	3	4				
MS27183-7	96906	5	25				
MS35058-22	96906	2	19				
MS35223-13	96906	9	5	RC32GF335J	81349	7	19
MS35223-15	96906	3	11	RC32GF335J	81349	8	26
MS35223-15	96906	5	13	RC32GF393K	81349	8	14
MS35223-17	96906	2	30				
MS35223-27	96906	6	15				
MS35223-28	96906	3	25				
MS35223-28	96906	4	7	RC42GF124J	81349	7	23
MS35223-28	96906	5	9	RC42GF154J	81349	5	10
MS35223-28	96906	7	14	RC42GF154J	81349	7	34
HS35223-28	96906	8	3	RC42GF154J	81349	8	17
MS35223-31	96906	3	33	RC42GF224J	81349	7	37
M535223-31	96906	7	3	RC42GF273J	81349	8	35
MS35223-31	96906	8	34	RC42GF333J	81349	8	23
MS35223-33	96906	7	2	RC42GF823J	81349	7	24
MS35223-43	96906	3	3	RN65D1153F	81349	8	7
MS35223-45	96906	2	31	RN65D1332F	81349	8	8
MS35223-46	96906	3	16	RN65D2153F	81349	8	2
MS35223-46	96906	5	24	RN65D3742F	81349	8	12
MS35223-47	96906	11	9	RN65D6812F	81349	6	7
MS35223-48	96906	3	8	RN65D7152F	81349	8	13
MS35223-5	96906	1	4	RN65D9310F	81349	8	11
MS35333-35	96906	1	5	RN70D1022F	81349	7	6
MS35333-36	96906	2	12	RN70D1034F	81349	8	21
MS35333-38	96906	2	4	RN70D1053F	81349	7	18
MS35333-42	96906	2	14	RN70D1432F	81349	5	5
HS35333-42	96906	4	28	RN70D1582F	81349	8	32
MS35333-42	96906	5	30	RN70D01823F81349	7	33	
MS35333-42	96906	6	4	RN70D2164F	81349	8	20
MS35335-29	96906	3	12	RN70D2742F	81349	7	21
MS35335-29	96906	5	14	RN70D3322F	81349	6	9
MS35335-29	96906	9	4	RN70D3322F	81349	7	17
MS35335-30	96906	3	26	RN70D3742F	81349	7	12
MS35335-30	96906	4	8	RN70D4053F	81349	8	19
MS35335-30	96906	5	6	RN70D5114F	81349	6	18
MS35335-30	96906	6	16	RV4LAYS205B	81349	6	26
M535335-30	96906	7	15	RV4NAYS105A	81349	4	3
MS35335-30	96906	8	4	RV4NAYS252A	24635	2	13
NS35335-31	96906	2	34	RV4NAYS253A	81349	5	28
MS35335-31	96906	3	5	RV4NAYS253A	81349	6	6
M535335-31	96906	5	26	RV4NAYS501A	81349	4	26
MS35335-31	96906	11	7	RV4NAYS502A	81349	6	1
MS3535-33	96906	5	3	RV4NAYS504A	81349	6	12
MS35644-224	96906	3	6	RW29V242	81349	7	20
M635649-222	96906	1	6	RW29V253	81349	7	39
HS35649-224	96906	2	5	RW29V302	81349	7	7
MS35649-224	96906	5	27	RW29V303	81349	7	13
MS35649-224	96906	11	8	RW74U1452	81349	7	11
MS35649-2252	96906	5	2	SMD659779	80063	11	10
MS35649-2382	96906	2	15	TS101P01	81349	5	8
MS35649-2382	96906	4	27	TS102P03	81349	5	12
MS35649-2382	96906	5	29	TS103P03	81349	5	16
M\$35649-2382	96906	6	3	U24410	24635	3	31
NS35649-242	96906	2	10	OA2	81349	4	11
M535649-242	96906	3	13	OA3	81349	4	24
MS35649-242	96906	5	15	1N4858	81349	2	25
MH35649-262	96906	3	27	1N4858	81349	8	1

**SECTION IV**

**TM 11-6625-822-40P**

**NATIONAL STOCK NUMBER AND PART NUMBER INDEX**

<b>PART NUMBER</b>	<b>FSCM</b>	<b>FIG. NO.</b>	<b>ITEM NO.</b>	<b>PART NUMBER</b>	<b>FSCM</b>	<b>FIG. NO.</b>	<b>ITEM NO.</b>
12AU7A	81349	4	15	424303	24635	4	22
12AX7	81349	4	16	424304	24635	4	21
421001	24635	2	6	424305	24635	4	20
42002	24635	1	3	424400	24635	5	21
421003	24635	2	7	424402	24635	4	1
422000	24635	1	1	424403	24635	6	20
422001	24635	11	5	424404	24635	3	24
422003	24635	11	1	424406	24635	3	38
422004	24635	11	3	424407	24635	4	29
422005	24635	11	4	424408	24635	5	4
422006	24635	11	2	424409	24635	1	7
42202	24635	11	6	424411	24635	5	1
422100	24635	1	2	424500	24635	3	19
422101	24635	2	3	424504	24635	5	17
422101	24635	3	29	424505	24635	3	17
473001	24635	2	16	425000	24635	4	18
423002	24635	2	2	425001	24635	3	10
423004	24635	2	11	425002	24635	3	20
423006	24635	2	8	425003	24635	6	2
423007	24635	2	22	425100	24635	5	19
423008	24635	6	24	425101	24635	7	4
423009	24635	6	11	425101	24635	8	5
423010	24635	6	13	425102	24635	3	37
423011	24635	3	1	425102	24635	7	1
423012	24635	2	20	425103	24635	3	32
423013	24635	6	8	425200	24635	3	28
423014	24635	2	1	425201	24635	7	8
423015	24635	2	38	425300	24635	3	36
423016	24635	2	28	425400	24635	2	18
423016	24635	4	4	425401	24635	10	3
423017	24635	2	29	425402	24635	10	2
423018	24635	2	27	425403	24635	10	1
423100	24635	3	2	425404	24635	10	5
423101	24635	3	15	425500	24635	2	37
423102	24635	3	23	425501	24635	9	1
423103	24635	3	35	425502	24635	9	6
423104	24635	3	40	425503	24635	9	2
423105	24635	3	14	425504	24635	9	3
423106	24635	3	9	426100	24635	3	30
423111	24635	3	7	426101	24635	8	33
433112	24635	3	18	426200	24635	3	34
424000	24635	2	36	426201	24635	8	9
424001	24635	2	33	426202	24635	8	10
424005	24635	6	14	426300	24635	7	35
424006	24635	2	17	426301	24635	3	39
424007	24635	3	21	47	08806	2	21
414008	24635	10	4	5U4GB	81349	4	25
424300	24635	4	17	6AU5GT	81349	4	6
424301	24635	4	19				
424302	24635	6	17				
424303	24635	3	22	6C4WA	81349	4	14

**LATEST NATIONAL STOCK NUMBER ASSIGNMENTS**

**LATEST PART NUMBER ASSIGNMENT**

<b>STOCK NUMBER</b>	<b>FIG.</b>	<b>ITEM</b>	<b>PART NUMBER</b>	<b>FSCM</b>	<b>FIG. NO.</b>	<b>ITEM NO.</b>
3040-00-133-5881	9	3	CM15CD820JN3	81349	7	32
5905-00-136-8434	7	31	CP04A1KE105K1	81349	2	24
5960-00-179-3710	4	10	CP04A1KE105K1	81349	5	20
5905-00-185-8490	6	5	MILR-11	81349	5	22
5905-00-186-3008	5	22	RRCR32G105JS	81349	8	30
5905-00-228-6084	7	27	RRCR32G123JS	81349	7	27
5905-00-247-8684	8	30	RRCR32G3Q4JS	81349	7	36
5905-00-247-8730	7	36	RRCR32G394JS	81349	8	36
5905-00-247-8730	8	36	RC20GF475J	81349	6	5
5905-00-279-1715	8	40	RC32GF155J	81349	8	18
5905-00-279-2652	8	18	RC32GF274J	81349	7	38
5905-00-279-4302	7	38	RC32GF274J	81349	8	29
5905-00-279-4302	8	29	RC32GF334J	81349	7	9
5905-00-299-1995	7	9	RC32GF334J	81349	8	38
5905-00-299-1995	8	38	RC32GF564J	81349	8	40
5950-00-491-8949	4	1	6AL5W6097	81349	4	13
5960-00-503-4880	4	11	6AU6WC	81349	4	10
5910-00-556-9455	2	24				
5910-00-556-9455	5	20				
5960-00-827-8782	4	16				
5961-00-840-5466	2	25				
5961-00-840-5466	8	1				
5960-00-879-5078	4	13				
5910-00-889-4777	7	32				
5935-00-935-2231	5	8				

By Order of the Secretary of the Army:

BERNARD W. ROGERS  
General, United States Army  
Chief of Staff

Official:

PAUL T. SMITH  
Major General, United States Army  
The Adjutant General

DISTRIBUTION:

Active Army:

USASA (2)  
COE (1)  
TSG (1)  
USAARENBD (1)  
DARCOM (1)  
TRADOC (2)  
OS Maj Cmd (4)  
LOGCOMDS (3)  
MICOM (2)  
TECOM (2)  
USARJ (2)  
USACC (4)  
MDW (1)  
Armies (2)  
Corps (2)  
HISA (Ft Monmouth) (33)  
Svc Colleges (1)  
USASIGS (5)  
USAADS (2)  
USAFAS (2)  
USAARMS (2)  
USAIS (2)

USAES (2)  
USAICS (3)  
MAAG (1)  
USARMIS (1)  
Instls (2) except  
Ft Gordon (10)  
Ft Huachuca (10)  
Ft Carson (5)  
Ft Richardson (ECOM Ofc) (2)  
LBAD (14)  
SAAD (30)  
TOAD (14)  
SHAD (3)  
Ft Gillem (10)  
Sig FLDMS (1)  
USAERDAA (1)  
USAERDAW (1)  
Units org under fol TOE:  
(1 copy each unit)  
29-134  
29-136

NG: None

USAR: None

For explanation of abbreviations used, see AR 310-50.

RECOMMENDED CHANGES TO EQUIPMENT TECHNICAL PUBLICATIONS



THEN... JOT DOWN THE DOPE ABOUT IT ON THIS FORM, CAREFULLY TEAR IT OUT, FOLD IT AND DROP IT IN THE MAIL!

**SOMETHING WRONG WITH THIS PUBLICATION?**

FROM: (PRINT YOUR UNIT'S COMPLETE ADDRESS)

DATE SENT

PUBLICATION NUMBER

PUBLICATION DATE

PUBLICATION TITLE

BE EXACT... PIN-POINT WHERE IT IS

PAGE NO.	PARA-GRAPH	FIGURE NO.	TABLE NO.

IN THIS SPACE TELL WHAT IS WRONG AND WHAT SHOULD BE DONE ABOUT IT:

TEAR ALONG PERFORATED LINE

PRINTED NAME, GRADE OR TITLE, AND TELEPHONE NUMBER

SIGN HERE:

DA FORM 2028-2  
1 JUL 79

PREVIOUS EDITIONS ARE OBSOLETE.

P.S.—IF YOUR OUTFIT WANTS TO KNOW ABOUT YOUR RECOMMENDATION MAKE A CARBON COPY OF THIS AND GIVE IT TO YOUR HEADQUARTERS.

